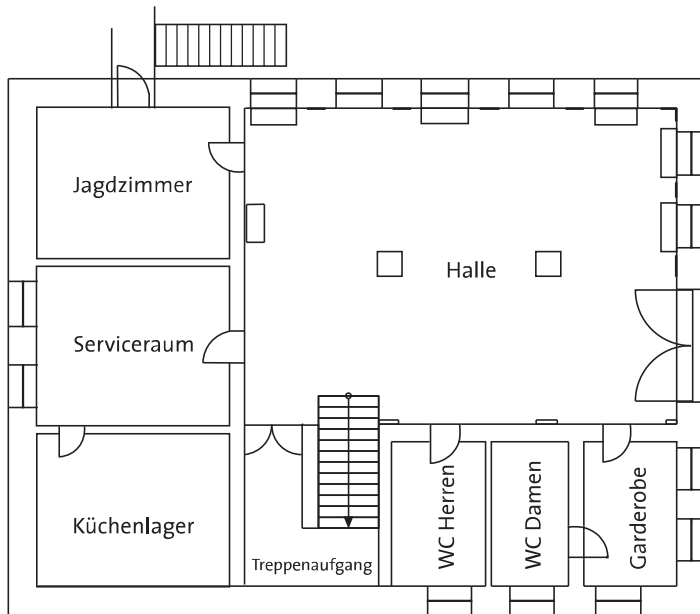
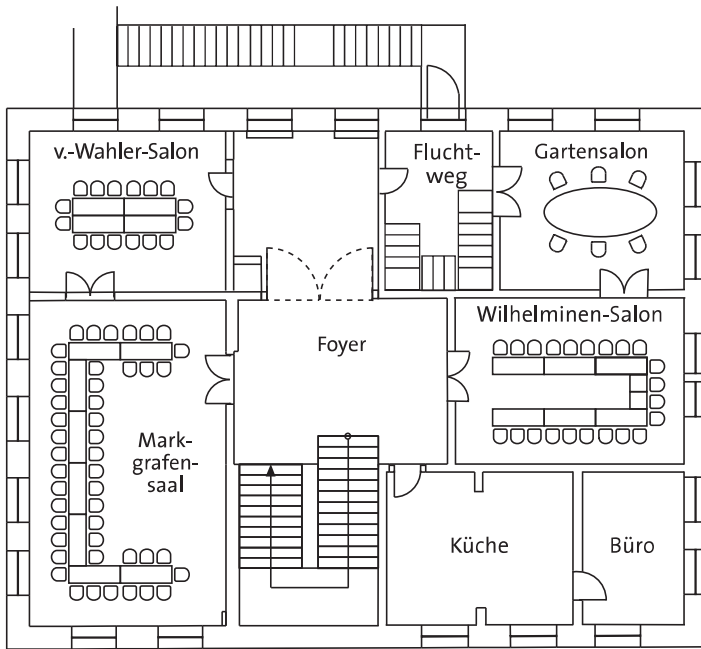


Erdgeschoss

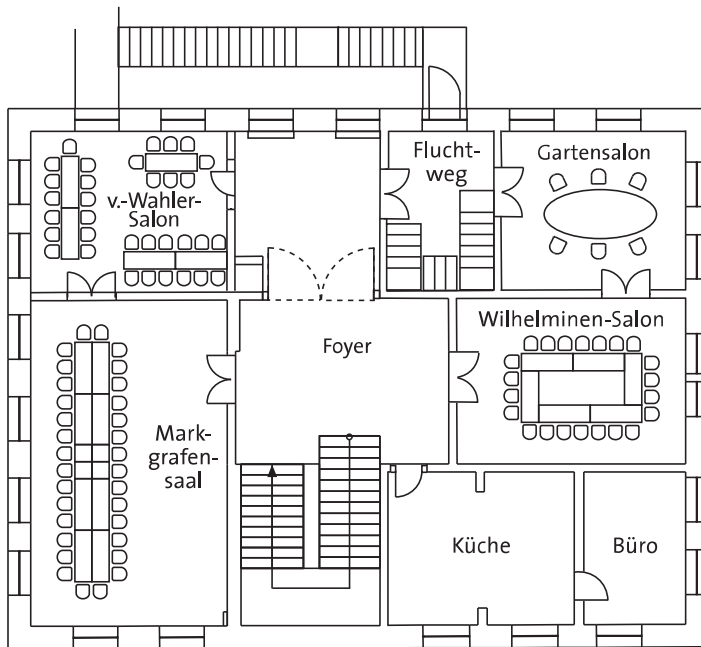




1. Obergeschoss

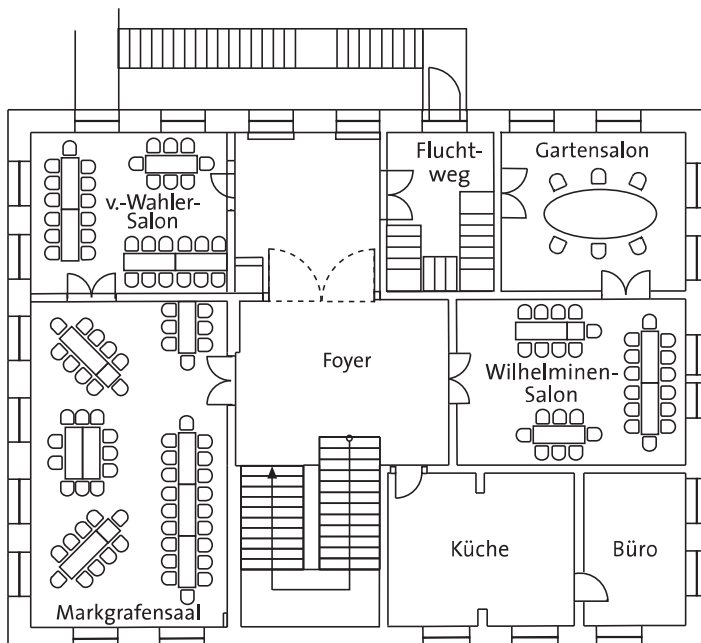
Bestuhlungsvariante 1

v.-Wahler-Salon:	16 Plätze
Markgrafensaal:	46 Plätze
Wilhelminen-Salon:	22 Plätze



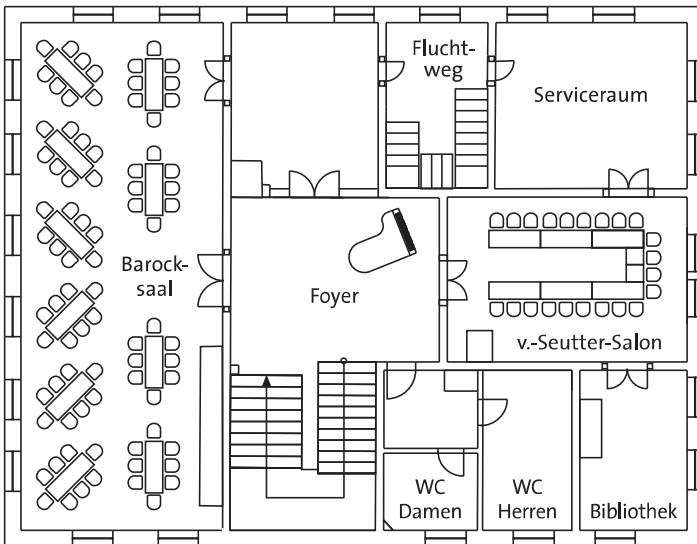
Bestuhlungsvariante 2

v.-Wahler-Salon:	33 Plätze
Markgrafensaal:	32 Plätze
Wilhelminen-Salon:	22 Plätze



Bestuhlungsvariante 3

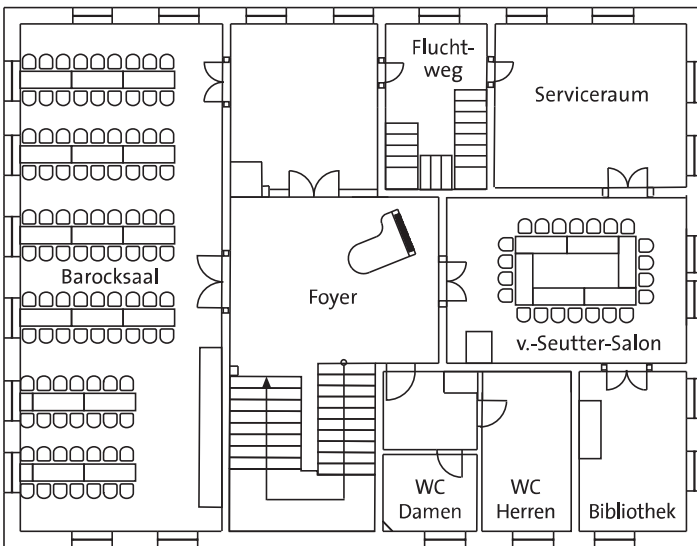
v.-Wahler-Salon:	33 Plätze
Markgrafensaal:	58 Plätze
Wilhelminen-Salon:	31 Plätze



2. Obergeschoss

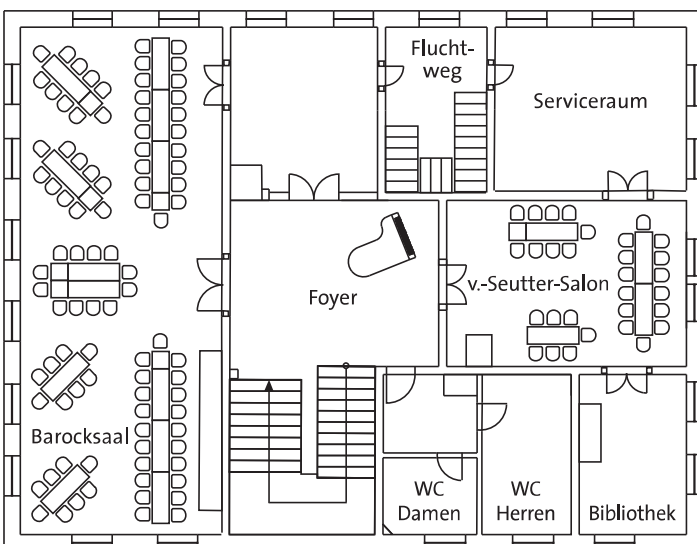
Bestuhlungsvariante 1

Barocksaal: 80 Plätze
v.-Seutter-Salon: 22 Plätze



Bestuhlungsvariante 2

Barocksaal: 100 Plätze
v.-Seutter-Salon: 22 Plätze



Bestuhlungsvariante 3

Barocksaal: 90 Plätze
v.-Seutter-Salon: 30 Plätze